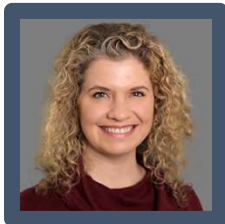


Improving the Impact of Social Programs Through a Comprehensive Approach to Design and Evaluation

Thursday, January 25, 2024
3:30 p.m. ET

Presenter Bios



Emilie Bagby

*Director, Global Education Research
Mathematica*

Emilie Bagby (Ph.D., Economics, University of Illinois at Urbana-Champaign) is the Director of Global Education Research at Mathematica. She specializes in designing and conducting rigorous evaluations, including impact, rapid cycle and performance, of education and workforce development programs in low- and middle-income country contexts, with a focus on disadvantaged populations. As a learning partner, she excels at identifying and implementing the appropriate methodology to generate learning, working with stakeholders to identify the most meaningful research questions to inform decision making, and combining available secondary data with primary data collection.



Doug Besharov

*Professor
University of Maryland School of Public Policy*

Douglas J. Besharov, a lawyer, is a professor at the University of Maryland's School of Public Policy, where he teaches courses on poverty, welfare, children and families, policy analysis and program evaluation, and performance measurement. He is also director of the University's Welfare Reform Academy and its Center for International Policy Exchanges.

In 2008, Professor Besharov was President of the Association for Public Policy Analysis and Management (APPAM) and then served as its International Conference Coordinator. He was also the editor of the "Policy Retrospectives Section" of APPAM's *Journal of Policy Analysis*

and Management. He chairs the selection committee for the “Peter H. Rossi Award for Contributions to the Theory or Practice of Program Evaluation.” Between 1975 and 1979, he was the first director of the U.S. National Center on Child Abuse and Neglect. Together with Neil Gilbert of the University of California (Berkeley), Professor Besharov is co-Editor-in-Chief of the Oxford University Press Library on International Social Policy.

Professor Besharov has written more than 250 articles, and has contributed to *The Los Angeles Times*, *The New York Times*, *The Wall Street Journal*, and *The Washington Post*.



Melissa Chiappetta

*Senior Education Advisor, Latin America and the Caribbean
U.S. Agency for International Development*

Melissa Chiappetta is a Senior Education Advisor with the USAID Latin America and Caribbean Bureau. She is a monitoring, evaluation, learning, and assessment expert with 21 years of experience. She provides technical support for dozens of USAID education, research, and evaluation activities in the LAC region. Prior to starting work at USAID, Ms. Chiappetta founded Sage Perspectives, a small firm focused on the provision of evidence to ensure more inclusive social development outcomes. Much of her work in the past six years has been focused on support for measurement of Sustainable Development Goal (SDG) 4.1.1, which seeks to ensure inclusive and equitable quality education and promote lifelong learning opportunities for all. She also served as the Founding Director of Abt Associates’ Center for International Evaluation, Director of Impact Evaluation for Social Impact, and Senior Research and Learning Advisor for USAID’s Center for Education. In these roles, Ms. Chiappetta oversaw or served on the technical team for dozens of performance and impact evaluations around the world. She has also developed and led numerous 1-day to 2-week trainings on evaluation for USAID, the US Department of State, international organizations, and small Colorado-based nonprofit organizations. Ms. Chiappetta is a Colorado native with a Master’s Degree in Foreign Service from Georgetown University and experience in approximately 30 countries.



Paul Decker

*President and Chief Executive Officer
Mathematica*

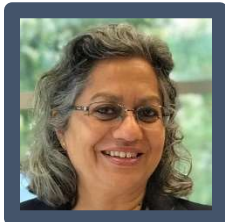
Paul Decker is a nationally recognized expert in policy research, data analytics, education, and labor policy. For three decades, he has worked to improve public well-being through the use of evidence to improve programs and policy.

As president and CEO of Mathematica, Decker sets the company’s vision and strategy, oversees its operation and management, and shapes its values and standards. During his tenure as CEO, Decker has expanded and diversified the company’s operations and

maintained its commitment to rigor and objectivity in new and evolving areas of research and analysis.

Decker is a member of CEO Action for Diversity and Inclusion. He is associate editor for the *Journal of Policy Analysis and Management* and a past president of the Association for Public Policy Analysis and Management, for which he also co-chaired the organization's strategic planning committee and served on the policy council. Decker serves as a trustee for the Committee for Economic Development and a co-chair of the organization's Committee on Workforce Issues. Decker writes and speaks regularly on trends in the policy research field and has testified before Congress, served as an expert adviser to both the U.S. and Canadian governments, and published widely in peer-reviewed journals.

Decker holds a Ph.D. in economics from the Johns Hopkins University and serves as chair of development on the board of advisers of the Thomas Jefferson Public Policy Program at the College of William and Mary, his undergraduate alma mater.



Anu Rangarajan

*Senior Fellow
Mathematica*

Anu Rangarajan is a senior fellow at Mathematica. She is an expert in experimental and QED evaluations, cost-benefit analyses, and she taught program evaluation at the School of International and Public Affairs at Princeton University for several years.

Previously, Anu was senior vice president and director of climate change and also led Mathematica's Global Unit, playing key roles on agriculture and energy evaluations, maternal and child health initiatives, and water and sanitation projects. She has studied the effects of technical assistance efforts to help cities reduce their greenhouse gas emissions using the Global Protocol for Community-Scale Greenhouse Gases, and supported an evidence review of results based payment approaches to support its application in the climate change domain. Rangarajan holds a Ph.D. in economics from Brown University.



Michelle Sager

*Managing Director for Strategic Issues
U.S. Government Accountability Office*

Michelle Sager is the Managing Director of GAO's Strategic Issues team. She oversees work on government-wide governance, strategy, performance, and resource issues—including the High Risk program and the annual Duplication, Overlap and Fragmentation reports.

Michelle first joined GAO in 1998. Her work at GAO has included a broad range of policy issues including intergovernmental, evidence-based policy, open data, budget, regulatory, international trade, and postsecondary education. Michelle left GAO in 2016 to accept a position as Director of the Economic Opportunity Division in the National Governors Association Center for Best Practices. She returned to GAO in 2018. Her prior experience also includes adjunct faculty, and legislative staff positions.

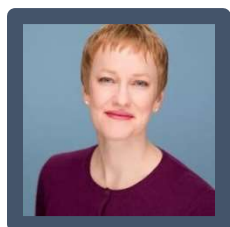
Michelle earned a doctorate degree in public policy and a master's degree in international commerce and policy from George Mason University. Michelle earned a bachelor's degree in communications and political science from Truman State University.



Michael Woolcock

Lead Social Scientist, Development Research Group
World Bank

Michael Woolcock is Lead Social Scientist in the World Bank's Development Research Group, where he has worked since 1998. For eighteen of these years, he has also been an Adjunct Lecturer in Public Policy at Harvard University's Kennedy School of Government. His current research focuses on strategies for enhancing state capability for implementation, on transformations in local social institutions during the development process, and on using mixed methods to assess the effectiveness of "complex" interventions. In addition to more than a hundred journal articles and book chapters, he is the author or co-editor of fourteen books, including *Contesting Development: Participatory Projects and Local Conflict Dynamics in Indonesia* (with Patrick Barron and Rachael Diprose; Yale University Press, 2011), which was a co-recipient of the 2012 best book prize by the American Sociological Association's section on international development, and *Building State Capability: Evidence, Analysis, Action* (with Matt Andrews and Lant Pritchett; Oxford University Press, 2017). Most recently, he has co-edited three scholarly volumes on case studies, popular culture, and the future of multilateralism, and written a book for a broader audience (*International Development: Navigating Humanity's Greatest Challenge*; Polity Press, 2023). An Australian national, he has a PhD in comparative-historical sociology from Brown University.



Alix Zwane

Chief Executive Officer
Global Innovation Fund

Alix Peterson Zwane is Chief Executive Officer of the Global Innovation Fund. She has 20 years of experience advancing the agenda of evidence-based aid and international development as an investor, a social entrepreneur, and an innovator herself.

Alix has worked at the intersection of the evidence and innovation agendas from a diverse set of posts. She was the first employee and Executive Director at Evidence Action, a non-profit that develops service delivery models to scale evidence-based programs. Under Alix's leadership, Evidence Action catalyzed school-based deworming for hundreds of millions of children around the world, and safe drinking water for millions of people in four countries. Alix launched Evidence Action Beta, an incubator for innovations in development. Alix has also advocated for evidence-based philanthropy at the Bill & Melinda Gates Foundation and Google.org, where she set strategy and made investments to support new public service models that work for the poor and developed models for outcome-based grant-making. She began her career in management consulting and was a member of the faculty of the Agricultural and Resource Economics Department at University of California, Berkeley.

Alix has published in *Science*, *Proceedings of the National Academy of Sciences*, the *Quarterly Journal of Economics*, and elsewhere. She previously served on the board of directors of Innovations for Poverty Action, the International Initiative for Impact Evaluation, and Evidence Action. She holds a Ph.D. in Public Policy from Harvard University and is a World Economic Forum Young Global Leader. Born and raised in Colorado, she divides her time between Washington, D.C. and London.