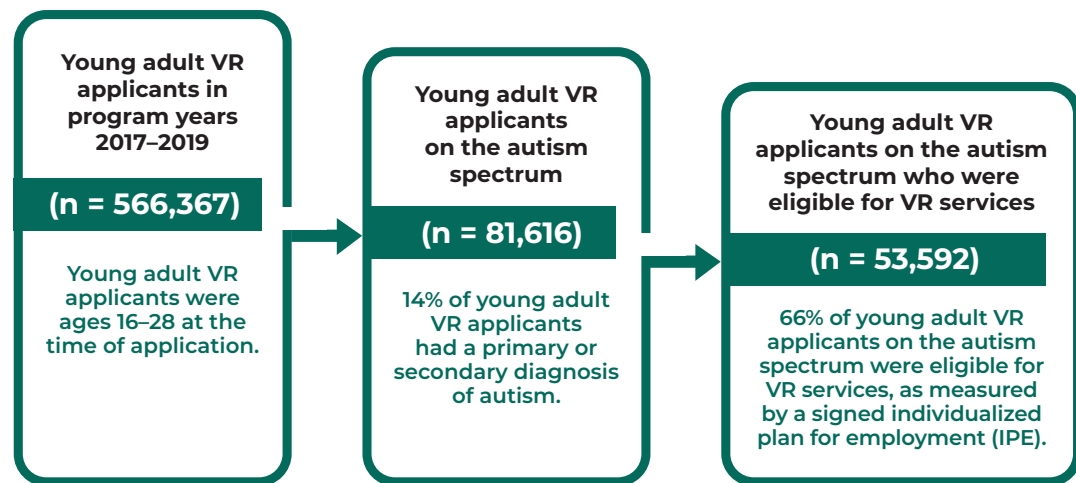


Vocational rehabilitation and autistic young adults: Characteristics, service use and outcomes

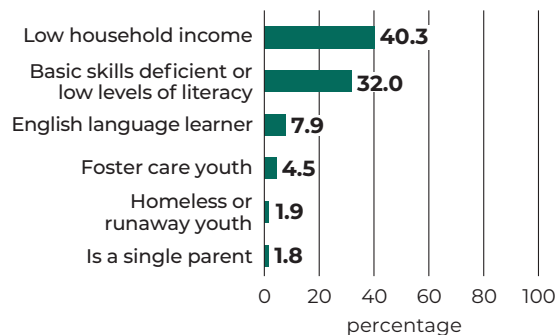


During 2017–2019, 86,616 young adults on the autism spectrum applied for Vocational Rehabilitation (VR) services.

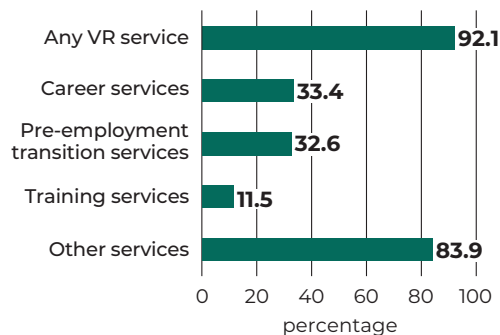


Among 53,592 autistic young adults with an IPE:

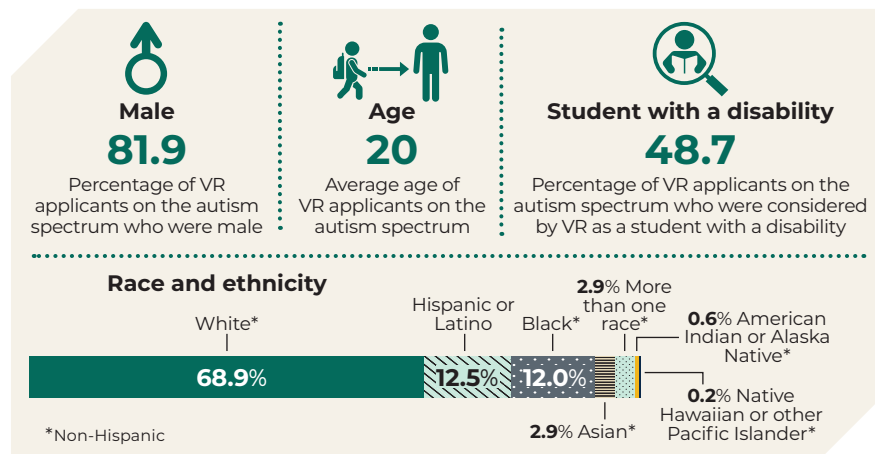
VR counselors identified several barriers to attaining employment; having low household incomes was the most common barrier.



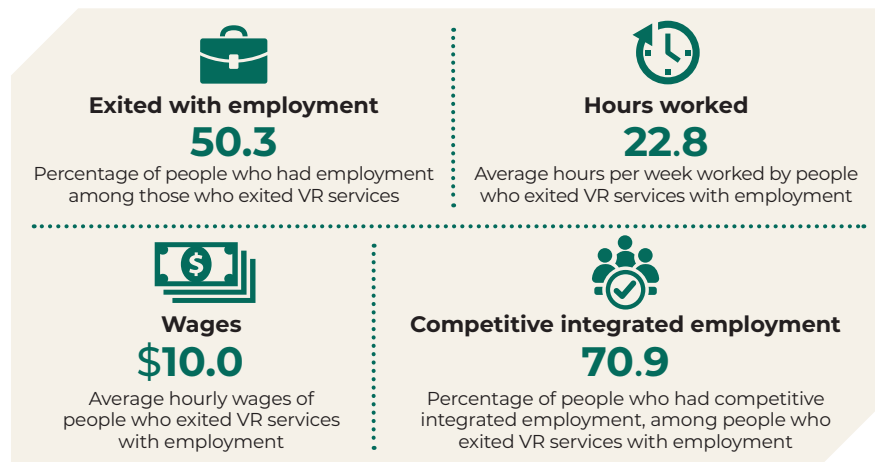
Nearly all used some VR services that year and about one third each used career services pre-employment transition services.



Most VR applicants on the autism spectrum were male and non-Hispanic White.



Among 115,640 autistic young adults who exited VR during 2017–2019, about half had employment, and most of them had competitive integrated employment.



Aside from those who exited with competitive integrated employment, almost all of the remaining people who exited with employment held supported employment in competitive integrated employment, which means they were employed in competitive integrated jobs while receiving ongoing support services from VR.