

Center for Studying Disability Policy

Insights from Federal Agencies on How to Engage People with Disabilities in Policies, Programs, and Evaluations

July 18, 2023



Webinar logistics



Closed Captioning

Click "Closed Caption" icon in the lower left corner of screen



Questions to Presenters

Select "All Panelists" in Q&A panel

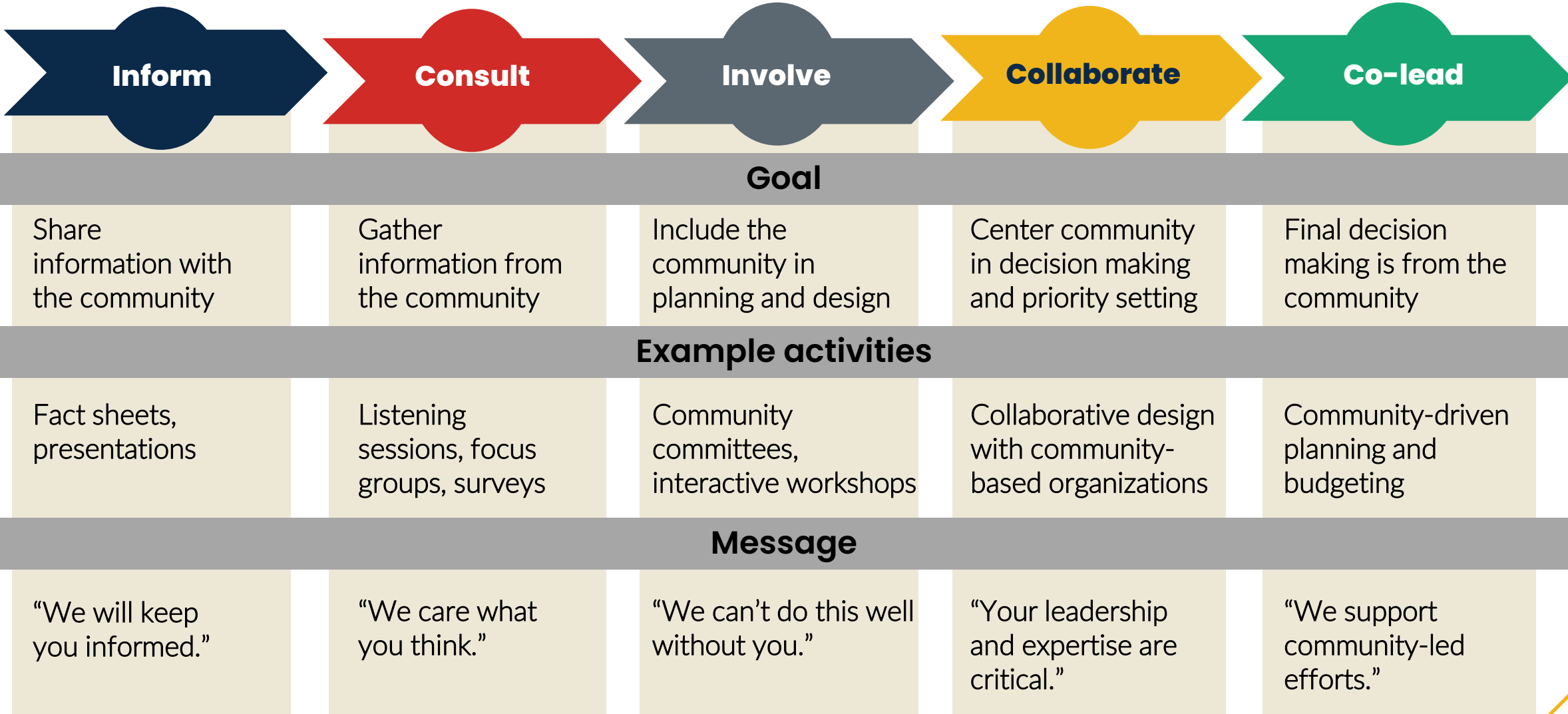


Requests for Assistance

Select "Host" in Q&A panel



Spectrum of community engagement



Source: Modified from the International Association for Public Participation



Speakers

/ **Jeffrey Hemmeter, Social Security Administration**

- Acting Deputy Associate Commissioner, Office of Research, Demonstration, and Employment Support

/ **Denise Hoffman, Mathematica**

- Principal Researcher

/ **Marie Lawrence, Administration for Children and Families**

- Senior Social Science Research Analyst, Office of Planning, Research, and Evaluation

/ **Purvi Sevak, Mathematica**

- Director of Disability Business Development

/ **Savi Swick, U.S. Department of Labor**

- Director of Research, Employment and Training Programs, Chief Evaluation Office



Thank you!

Find webinar materials and a recording of this webinar at
<https://www.mathematica.org/events/insights-from-federal-agencies-on-how-to-engage-people-with-disabilities>