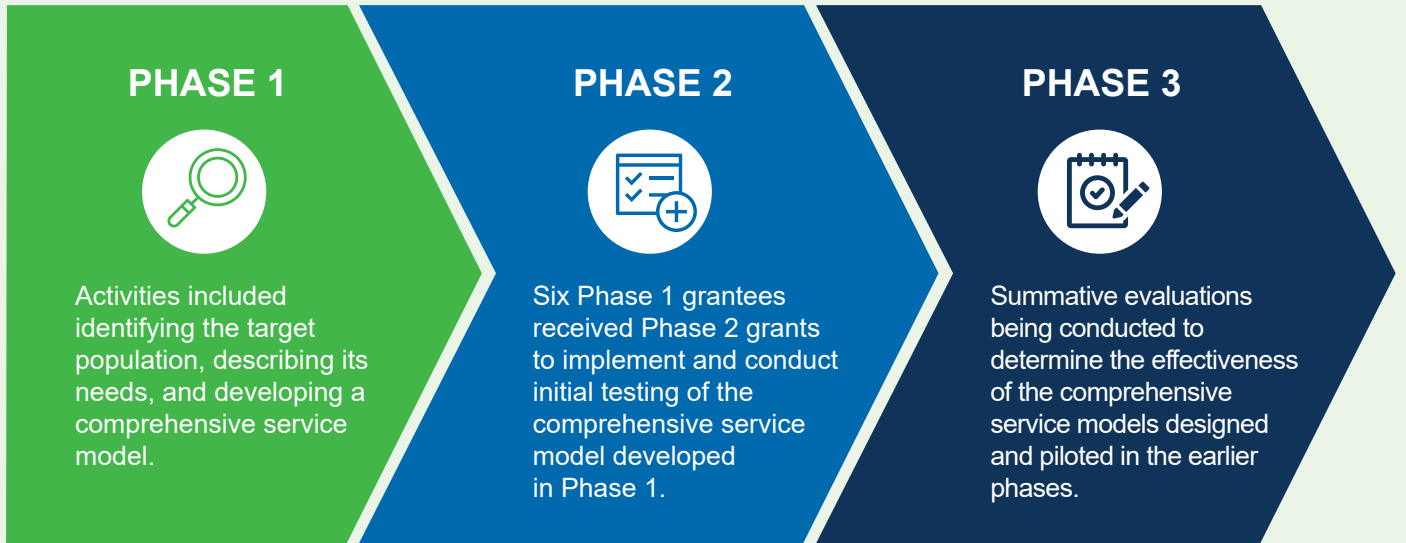


# Youth At-Risk of Homelessness

## What we've done and where we're going

Youth and young adults with a history of child welfare involvement face significant challenges in their transition to adulthood, which increases their risk of becoming homeless. To build the evidence base on what works to prevent homelessness for those who have been involved in the child welfare system, the Children's Bureau funded a multi-phase grant program referred to as Youth At-Risk of Homelessness (YARH).

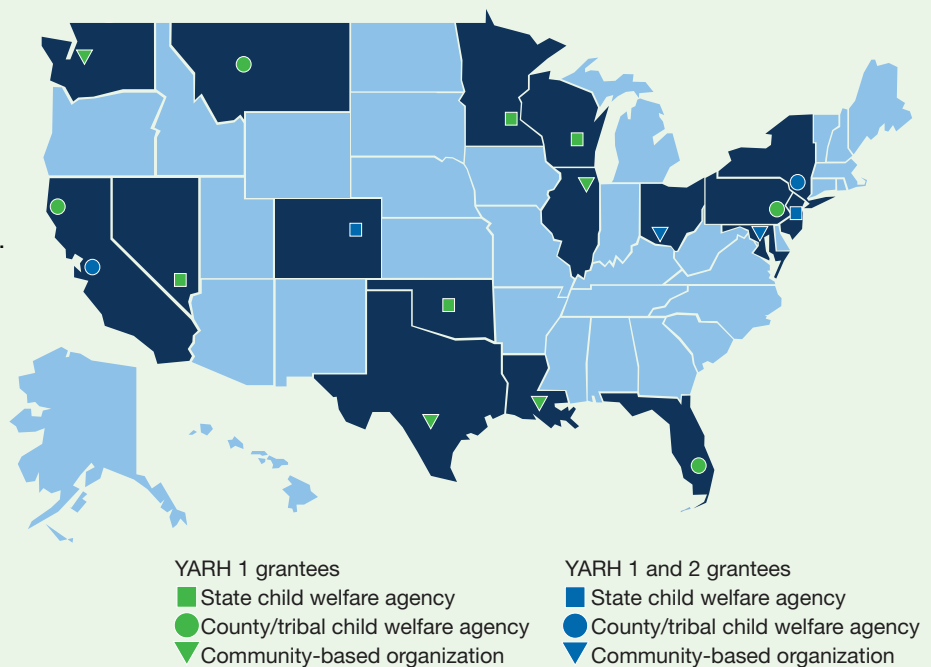
### Multi-Phase Grant Program



### Where Is YARH?


The YARH grantees represent a diverse array of geographic areas and organizations:

- PHASE 1** Grantees are located in **17 states** across the nation.
- PHASE 2** Grantees are located in **6 states**
- PHASE 3** Providing support to organizations from Phase 2




# Focal Populations and Outcomes


## Populations



Adolescents who enter foster care between ages 14 and 17

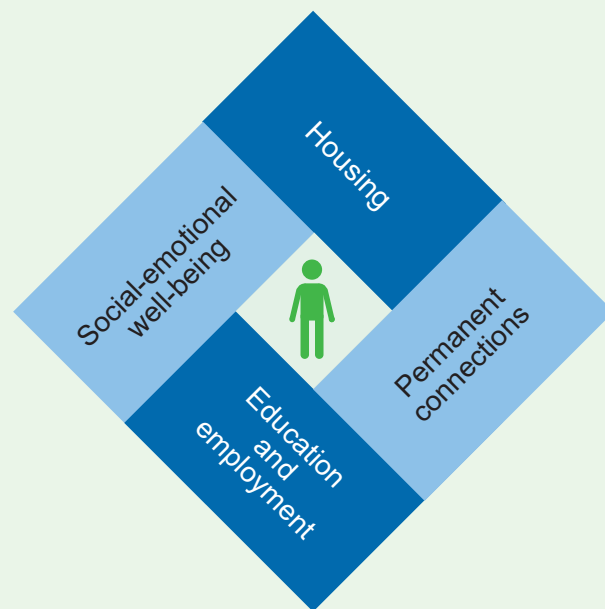


Young adults aging out of foster care

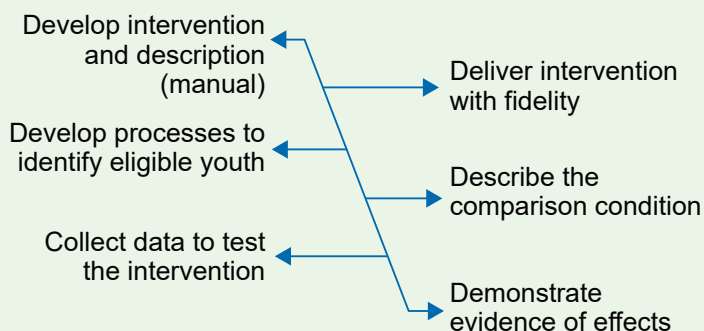


Homeless youth/young adults with foster care histories up to 21

## Outcomes



## Building Evidence Takes Time



## How Will We Continue to Learn?

### Watch for new YARH-2 products:

- Process study results
- Lessons from the field
- Other products building from grantee experiences that will be useful to the field

### Watch for YARH-3 products:

- New issue briefs
- An episode of Mathematica's *On the Evidence* podcast
- A blog post on Mathematica's *Evidence in Action* blog

## Related Briefs

### Federal and Local Efforts to Support Youth At-Risk of Homelessness

<https://www.acf.hhs.gov/opre/resource/federal-and-local-efforts-to-support-youth-at-risk-of-homelessness>

### Strengthening Grantee Capacity Through Evaluation Technical Assistance

<https://www.acf.hhs.gov/opre/resource/strengthening-grantee-capacity-through-evaluation-technical-assistance>

### Youth Engagement in Child Welfare Service Planning

<https://www.acf.hhs.gov/opre/resource/youth-engagement-in-child-welfare-service-planning>

For a full list of publications, visit the YARH project page:

<https://www.acf.hhs.gov/opre/research/project/building-capacity-to-evaluate-interventions-for-youth-with-child-welfare-involvement-at-risk-of-homelessness>

To learn more: Contact Mary Mueggenborg, Office of Planning, Research & Evaluation project officer at [Mary.Mueggenborg@acf.hhs.gov](mailto:Mary.Mueggenborg@acf.hhs.gov) or Cay Bradley, Mathematica senior researcher, at (202) 250-3585 or [CBradley@mathematica-mpr.com](mailto:CBradley@mathematica-mpr.com).